

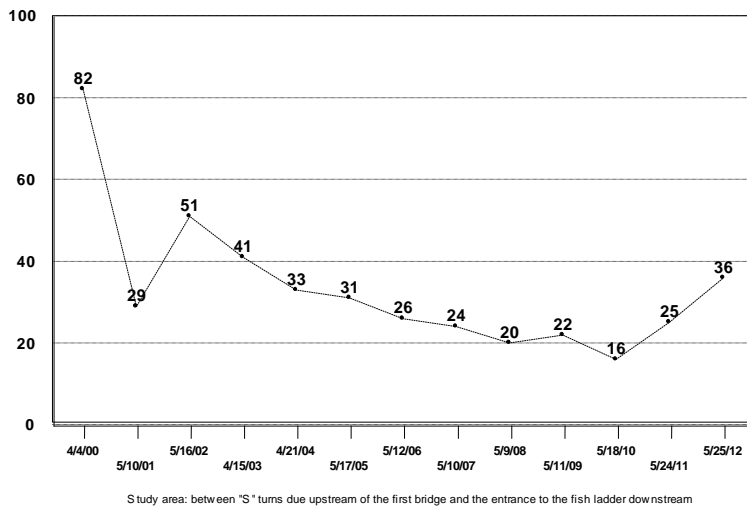
2012 STONEFLY EXOSKELETON COUNT FAUNTLEROY CREEK

Fifth-grade students and their kindergarten reading buddies from Arbor Heights Elementary School conducted the annual stonefly exoskeleton count on May 25. The survey was later than the preferred timing (early- to mid-May) but not out of line with prior dates.

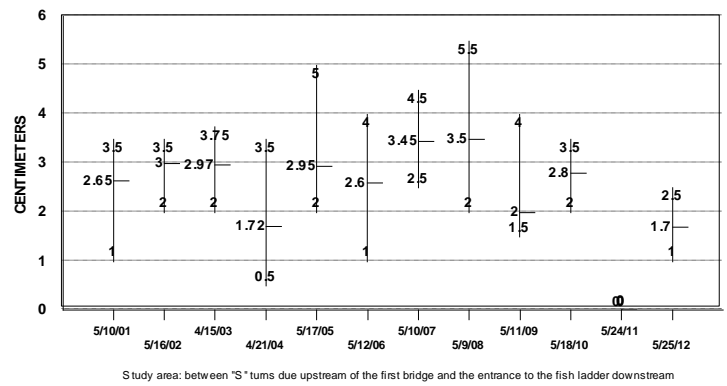
Research teams followed established protocol by counting all exoskeletons they could find on trees, bushes, bridges, and fences in the study area. The measuring team accurately measured 10 torsos.

FINDINGS

**NUMBER OF STONEFLY EXOSKELETONS
FAUNTLEROY CREEK**



**LENGTH OF STONEFLY EXOSKELETONS
TORSO RANGE AND AVERAGE
FAUNTLEROY CREEK**



Despite the late timing of the annual count, students were able to locate 36 exoskeletons, giving an upward direction to the abundance line for the second year. Compared with other years, size was on the small side.

In 2011, 14 spawner carcasses were left to boost the food supply for recently hatched stonefly nymphs. No carcasses were left in 2010.

OBSERVATIONS

Factors that may have contributed to this year's findings include

- the late date of the count (exoskeletons were casually observed up to five weeks prior to the survey)
- "home hatch" fry were present in the study area this year to eat the nymphs
- lack of carcass nutrients in 2010 may have stunted early growth of these nymphs.